

Fresh-r Compac - cleaning or replacing fans



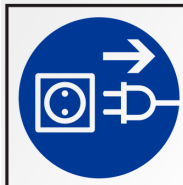
Preface

To keep your Fresh-r ventilation system in good condition, we recommend cleaning both fans every 2 years. The Fresh-r is designed in such a way that the parts that need to be maintained are easily accessible. The manufacturer Vaventis B.V. is not liable for incorrect operation of the Fresh-r as a result of inadequate or incorrect maintenance. If you have any questions, please contact your supplier or Fresh-r via support@fresh-r.eu.

For safety reasons it is important to always switch off the Fresh-r or unplug the Fresh-r from the socket before starting maintenance.

Images shown may vary slightly by model.

Cleaning or replacing fans



WARNING

Disconnect Power Supplies Before Servicing or Cleaning.

- Do not perform any maintenance activities other than specified in this manual
- Before starting maintenance, make sure the switch is in the OFF position or the power cord is disconnected from the electrical outlet.
- During maintenance, do not turn the switch to the ON position or plug in the power cord.

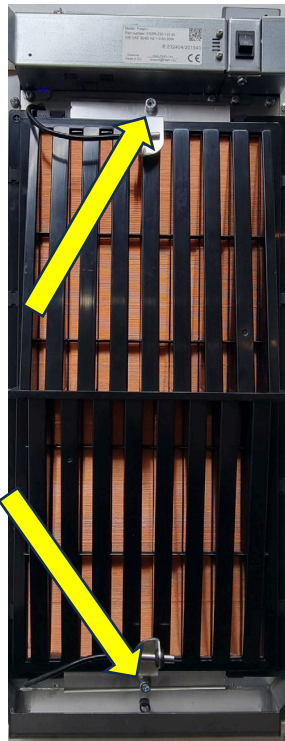
Dust can accumulate behind the fan space and on the fan blades. For optimum operation of the Fresh-r, they should be cleaned every 2 years.

- Frequency: every 2 years
- Open the Fresh-r by removing the door cover or opening the door. On certain models, the door is secured at the bottom with a screw.
- Make sure the on/off switch is in the OFF position or unplug the plug from the socket.
- To remove the bottom fan, always remove the top fan first



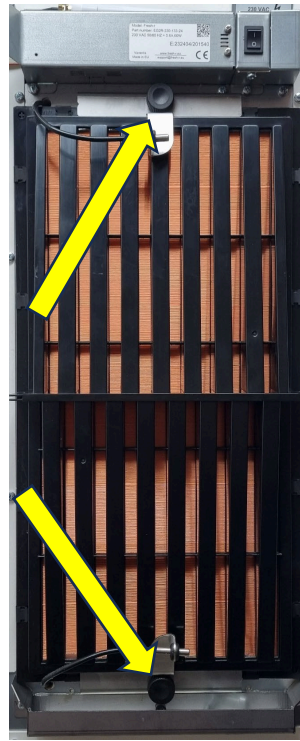
Turn off the Fresh-r using the on/off button or by unplugging the plug from the socket.

Then remove the heat exchanger. The way it is attached may vary per model.



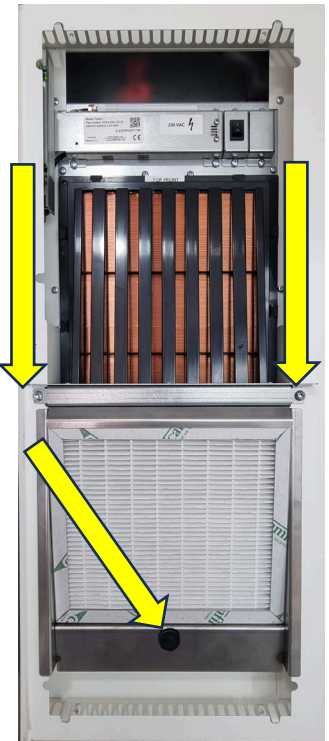
Mounting with two clamps and Allen bolts.

Use a 5 mm/0.2 inch Allen key to loosen both clamps.



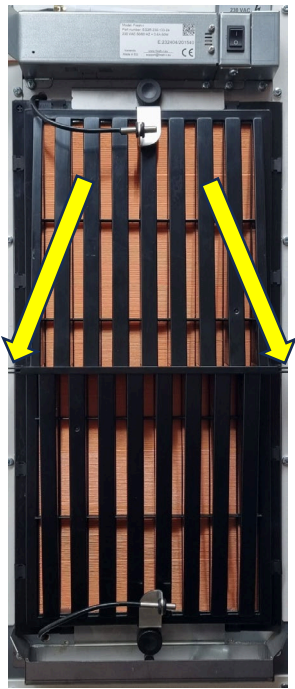
Mounting with two clamps and rotary knobs.

Loosen both knobs to release both clamps.



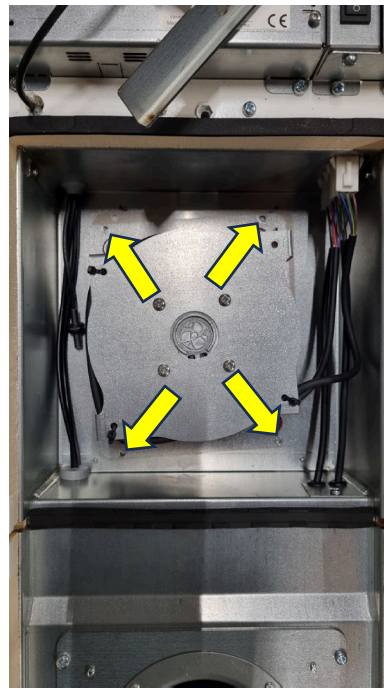
Mounting with center bar and with a fine dust filter.

If present, first remove the filter holder including filter. The filter holder is secured at the bottom with a rotary knob. Then remove the center bar with a torx T4 screwdriver or bit.

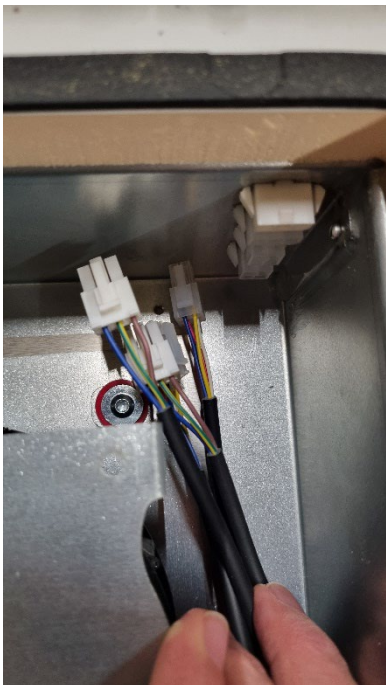


Remove the heat exchanger by grabbing it halfway along the sides and pulling it towards you.

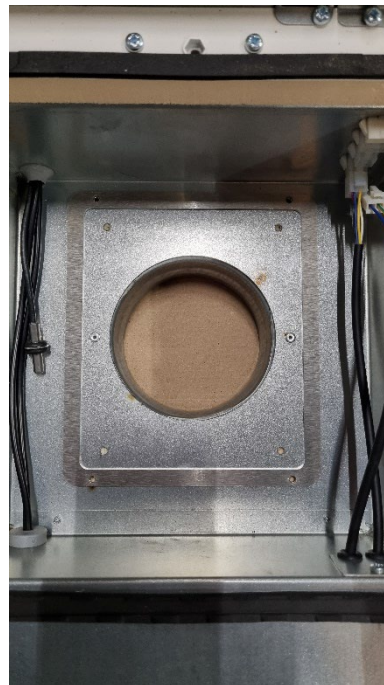
If necessary, also clean the heat exchanger. See the instructions 'Compac - Cleaning Heat Exchanger'.



Unscrew the 4 screws from the top fan.



Unplug the four plugs. Press the tab on the connector and pull the cable down. You can now remove the top fan.



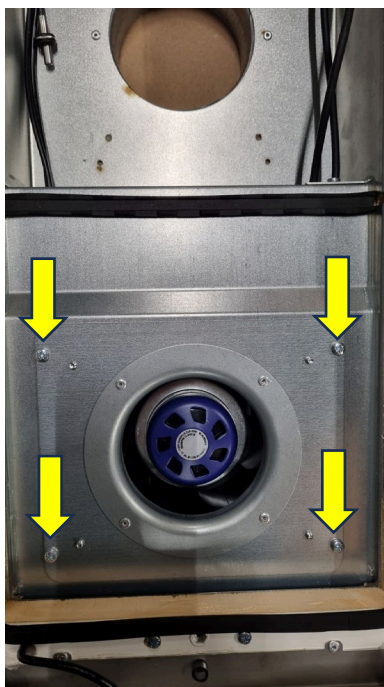
Depending on the model, there is a square ring under the top fan. Remove this as well.



Loosen the screw of the small cable plate



Remove the cable attachment including the metal plate: grab both cables and push them outwards



Unscrew the 4 screws from the bottom fan



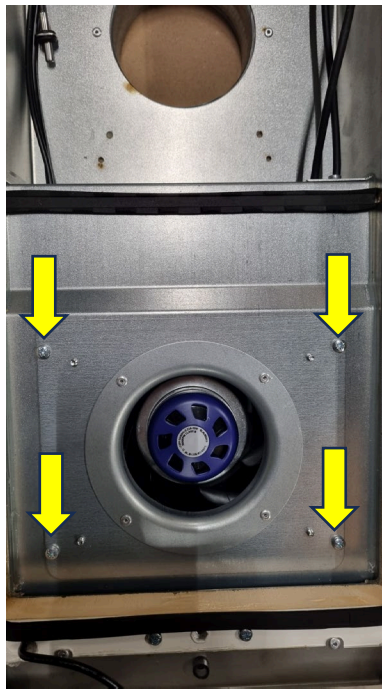
Remove the fan. Be careful when guiding the cables through the opening.



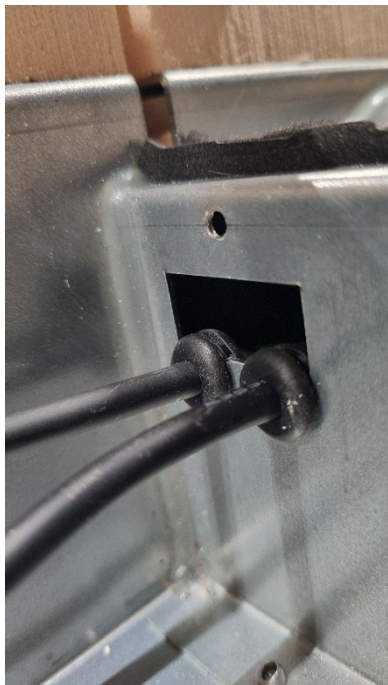
Clean both compartments with a vacuum cleaner. Check the inlet and outlet pipes for leaves etc.



Brush dirt from the fans and clean with vacuum cleaner.



Replace the bottom fan. Guide both cables back through the opening on the right side. Screw the fan in place. Give the fan a spin to hear if it spins freely. If the fan does not spin freely, unscrew it again and make sure that both cables run on the right side towards the cable opening.



Slide both rubbers into place.



Push both cables down slightly.



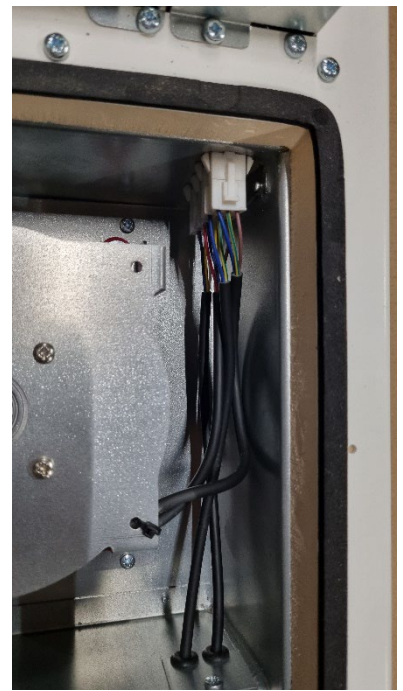
Slide the metal plate back into the opening of the rubber rings. Screw tight.



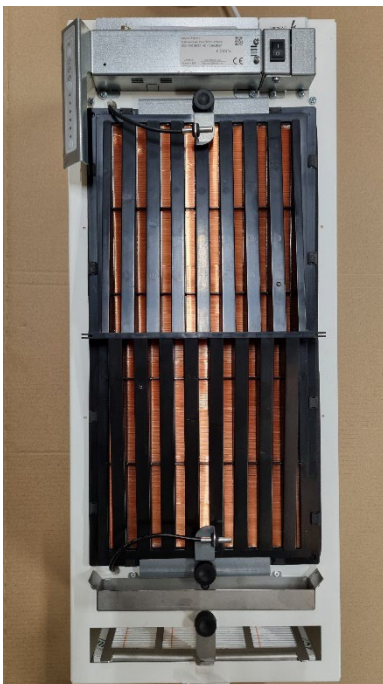
Connect the 4-wire cable to the bottom plug. The cable is connected correctly when you hear a click. Wait to connect the 3-wire cable until after replacing the top fan



Replace the square ring. Place the top fan on top of it. Screw it tight.



Connect the rest of the plugs. Guide the cables along the right side to the connection points. Make sure you hear a click at each plug when you plug it in. Order from bottom to top:
4-wire cable top fan
3-wire cable bottom fan
3-wire cable top fan



Replace the heat exchanger with the sticker 'TOP FRONT' on the top and front. Re-secure the heat exchanger with the clamps or centre bar.
Optional: replace the filter holder.

Switch the Fresh-r back on. Wait 10-20 seconds until the fans are running. Listen carefully to hear if the fans are turning freely. If you hear a rattling sound, switch the Fresh-r off immediately and repeat the steps to check if any cables are touching the fans.

Replace the door and, if applicable, attach the screw to the bottom of the door.